

Independence from Kinetoplast DNA Maintenance and Expression Is Associated with Multidrug Resistance in *Trypanosoma brucei* In Vitro

Matthew K. Gould,* Achim Schnauffer

Centre for Immunity, Infection & Evolution, Institute of Immunology & Infection Research, University of Edinburgh, Edinburgh, United Kingdom

It is well known that several antitrypanosomatid drugs accumulate in the parasite's mitochondrion, where they often bind to the organellar DNA, the kinetoplast. To what extent this property relates to the mode of action of these compounds has remained largely unquantified. Here we show that single point mutations that remove the dependence of laboratory strains of the sleeping sickness parasite *Trypanosoma brucei* on a functional kinetoplast result in significant resistance to the diamidine and phenanthridine drug classes.

Trypanosomes are protist parasites that are the causative agents of a range of pathogenic infections in humans and in animals. A defining characteristic of these organisms is the presence of the kinetoplast, a unique structure comprising the cell's mitochondrial genome (kDNA). In the disease-causing long slender bloodstream forms (BF) of *Trypanosoma brucei*, subspecies of which cause human African trypanosomiasis (HAT) (or sleeping sickness, caused by *T. brucei rhodesiense* and *T. brucei gambiense*) and animal African trypanosomiasis (AAT) (caused by *T. brucei brucei*), the presence of a functional kinetoplast is essential (1–3). However, the closely related animal pathogens *Trypanosoma equiperdum* and *Trypanosoma evansi* are dyskinetoplastic (DK) (i.e., lacking all or critical parts of their kDNA), with no apparent detrimental effect (4, 5). Single point mutations had been identified in the nuclear encoded subunit γ of the mitochondrial F_1F_0 -ATPase of the naturally DK trypanosomes *T. evansi* and *T. equiperdum* (6) and in a laboratory strain of *T. brucei brucei* (7) that was chemically induced to lose its kinetoplast through long-term exposure to the DNA intercalator acriflavine (8). We recently reported that some of these mutations are sufficient to fully compensate for the complete loss of kDNA in BF *T. brucei* (9). The mechanism involves F_0 -independent generation of the essential mitochondrial membrane potential ($\Delta\psi_m$), obviating the need for expression of the kDNA-encoded F_0 subunit *a* (9).

A number of current and potential trypanocidal chemotherapies, and their related compounds, have been shown to accumulate in the mitochondrion and/or interact with kDNA (10–13). Other compounds have been proposed to act, at least in part, by disrupting the replication of kDNA through the inhibition of key enzymes, such as the topoisomerases (14–18). Until now, attempts to quantify the degree to which compounds target the kinetoplast have relied upon comparing the sensitivities of divergent strains and species (16, 19–21). Consequently, the ability to draw definitive conclusions was limited by unknown effects of inter-strain/species variations acquired through differing evolutionary selection pressures or culturing histories.

We generated BF *T. brucei brucei* strain Lister 427 trypanosomes ectopically expressing F_1F_0 -ATPase subunit γ with an L262P or A281del mutation with both endogenous alleles knocked out. We generated a reference cell line that constitutively expressed ectopic wild-type (WT) subunit γ in a double-endogenous knockout background. DK versions of each mutant γ -ex-

pressing cell line were obtained by exposure to 20 nM acriflavine for 7 days (9).

The generation of otherwise isogenic cell lines, either dependent or not on functional kDNA, allowed us to conclusively establish to what extent the mode of action of antitrypanosomatid compounds is related to the parasite's dependence on kDNA maintenance or expression. The 50% effective concentrations (EC_{50} s) were determined for a panel of trypanocidal compounds using a slightly modified version of the alamarBlue method (22) as described previously (9).

For the topoisomerase inhibitors etoposide, camptothecin, norfloxacin, and enoxacin, no major change in sensitivity was observed in the kinetoplast-independent γ L262P-expressing trypanosomes, either with or without the kinetoplast, compared to that of the γ WT-expressing controls (see Table S1 in the supplemental material). These data suggest that for these compounds, the dominant mode of action is not related to kDNA maintenance or expression, which contrasts with a study in *Trypanosoma cruzi* that reported a kDNA-specific effect for norfloxacin and enoxacin (17). Similarly, for the antimalarial atovaquone, a compound that targets the mitochondrial cytochrome bc_1 complex in *Plasmodium falciparum* (23), no differences in sensitivity were observed (see Table S1). This is not surprising, since this complex is not expressed in BF *T. brucei* (24). Interestingly, proguanil, a compound that acts synergistically with atovaquone, presumably by inhibiting an alternative mode of generating the essential mitochondrial membrane potential ($\Delta\psi_m$) that is independent of the mitochondrial electron transport chain (23), also displayed no differences in potency. Hence, the alternative mechanism for generating the

Received 17 January 2014 Returned for modification 7 February 2014

Accepted 8 February 2014

Published ahead of print 18 February 2014

Address correspondence to Achim Schnauffer, achim.schnauffer@ed.ac.uk.

* Present address: Matthew K. Gould, Biocenter, Section Genetics, Ludwig-Maximilians-Universität München, Martinsried, Germany.

Supplemental material for this article may be found at <http://dx.doi.org/10.1128/AAC.00122-14>.

Copyright © 2014 Gould and Schnauffer. This is an open-access article distributed under the terms of the [Creative Commons Attribution 3.0 Unported license](http://creativecommons.org/licenses/by/3.0/).

doi:10.1128/AAC.00122-14

$\Delta\psi$ m that operates in DK trypanosomes is sufficiently different from the one in atovaquone-treated *Plasmodium* to be insensitive to proguanil.

Of the compounds tested that are currently used to treat HAT and AAT, nifurtimox, suramin, and melarsen oxide showed no kinetoplast-specific activity (see Table S2 in the supplemental material); however, major resistance to the diamidine and phenanthridine trypanocide classes was displayed. For pentamidine, minor resistance factors of 2.7 and 2.5 for γ L262P-expressing trypanosomes with and without kDNA, respectively, were observed (Table 1). The resistance to diminazene was more pronounced, resulting in average EC_{50} s that were higher by factors of 8.1 or 8.5 (with or without kinetoplast, respectively) (Table 1). Likewise, for the fluorescing DNA stain 4',6-diamidino-2-phenylindole (DAPI), also a diamidine, resistance factors of 32.0 and 31.5, respectively, were displayed by the same mutant cell lines (Table 1). The highest resistance shown by γ L262P-expressing cell lines for any of the diamidine compounds tested was for DB829, with resistance factors of 35.5 and 41.7 (with and without kinetoplast, respectively) (Table 1).

Even greater resistance was displayed by the γ L262P mutants to the phenanthridine class of drugs, used for AAT chemotherapy (25). The average EC_{50} s for γ L262P-expressing cells that still retained a kinetoplast were higher by factors of 82.3, 217.3, and 140.0 for isometamidium, ethidium bromide (EtBr), and dihydroethidium, respectively (Table 1). These EC_{50} s (derived from a modified 3-day alamarBlue assay) were confirmed to be broadly representative of the long-term effects on parasite growth by conducting cumulative growth curves over 7 days in the presence of various concentrations of isometamidium for γ L262P and γ WT-expressing trypanosomes (see Fig. S1A and B in the supplemental material). In the DK version of the γ L262P mutants, the resistance factors for the phenanthridines were significantly increased by a further 1.9- (isometamidium), 1.3- (EtBr), and 1.9-fold (dihydroethidium), suggesting that the potency of this compound class is slightly enhanced by the presence of kDNA, even though the cells are no longer dependent on its expression. Exposure to diamidines and phenanthridines invariably resulted in kDNA loss (data not shown), confirming the reported interference of these compounds with kDNA maintenance (12, 14–18). The effect of EtBr on kDNA was investigated in great detail and was shown to inhibit replication initiation of free minicircles (16).

T. brucei cells expressing the γ A281del mutation retain some dependence on a functional kinetoplast, at least *in vitro* (9); however, after a period of ~7 days in the presence of acriflavine, the mutants can adapt to the kinetoplast loss (9). This requirement for additional adaptations in the γ A281del cell line is consistent with the generally low level of resistance displayed against the diamidine and phenanthridine compounds, compared to its DK version or the γ L262P cell lines (Table 1). Since the alamarBlue assay is conducted over only 3 days, the kinetoplast-retaining γ A281del mutants do not have enough time to adapt to test compound-induced loss of kinetoplast expression and consequently have EC_{50} s close to those of γ WT-expressing trypanosomes.

The lack of resistance to DB75 by the γ A281del cell lines (with or without kinetoplast) mirrors the minor resistances presented by the γ L262P-expressing trypanosomes, in contrast to the major resistance to DB829 that was observed. DB829 and its prodrug version DB868 are currently under intensive development as potential new chemotherapies for stage II HAT (26–28). Interest-

TABLE 1 Cross-resistance characterization of L262P or A281del mutated ATP synthase γ expressing trypanosomes with both endogenous alleles knocked out, with or without (DK) their kinetoplast, compared to WT ATP synthase γ -expressing control^a

Compound ^b	γ L262P			γ L262P (DK)			γ A281del			γ A281del (DK)		
	Lister 427 EC_{50} (mean \pm SEM) (nM)	γ WT EC_{50} (mean \pm SEM) (nM)	Resistance factor vs γ WT	EC_{50} (mean \pm SEM) (nM)	Resistance factor vs γ WT	Resistance factor vs γ L262P	EC_{50} (mean \pm SEM) (nM)	Resistance factor vs γ WT	Resistance factor vs γ L262P	EC_{50} (mean \pm SEM) (nM)	Resistance factor vs γ WT	Resistance factor vs γ A281del
Acriflavine	2.1 \pm 0.1	2.9 \pm 0.2	6.1**	17.6 \pm 0.5	16.1 \pm 0.4	0.9	3.8 \pm 0.6	1.3	44.8 \pm 6.6	15.4*	11.8*	
Diamidines												
DB75	5.0 \pm 0.3	5.0 \pm 0.1	3.1**	15.6 \pm 1.2	18.2 \pm 0.7	1.2	3.9 \pm 0.5	0.8	2.7 \pm 1.1	0.5	0.7	
DB829	35 \pm 6	23 \pm 2	35.5*	817 \pm 196	958 \pm 167	41.7*	64 \pm 4	2.8***	1047 \pm 235	43.5*	16.4*	
Pentamidine	0.8 \pm 0.2	1.0 \pm 0.2	2.7*	2.7 \pm 0.2	2.5 \pm 0.4	0.9	2.0 \pm 0.2	2.0*	6.3 \pm 0.5	6.3***	3.2**	
Diminazene	5.0 \pm 0.7	3.4 \pm 0.4	8.1*	27.6 \pm 5.7	28.8 \pm 5.1	8.5*	8.3 \pm 0.7	2.4**	59.7 \pm 6.5	17.6**	7.2*	
DAPI	6.3 \pm 0.1	3.1 \pm 0.2	32.0**	99.3 \pm 8.3	97.8 \pm 8.9	1.0	5.8 \pm 0.1	1.9	27.4 \pm 3	88.4***	47.2***	
Phenanthridines												
Isometamidium	0.32 \pm 0.01	0.40 \pm 0.02	82.3**	32.9 \pm 3.7	63.9 \pm 2.1	1.9**	0.32 \pm 0.04	0.8	198 \pm 6	495.0***	618.8***	
Ethidium bromide	0.9 \pm 0.1	1.1 \pm 0.1	217.3***	239 \pm 8	318 \pm 5	289.1***	0.7 \pm 0.1	0.6	61.3 \pm 20	557.3***	875.7***	
Dihydroethidium	2.6 \pm 0.5	0.8 \pm 0.1	140.0*	112 \pm 14	208 \pm 13	260.0**	0.9 \pm 0.1	1.1***	833 \pm 28	1041.3***	925.6***	

^a Asterisks indicate statistically significant resistance, as calculated using a one-tailed Student's *t* test: *, $P < 0.05$; **, $P < 0.01$; ***, $P < 0.001$.

^b The DB compounds and isometamidium were kind gifts from David Boykin and Michael Barrett/Harry de Koning, respectively. All other compounds were purchased from Sigma.

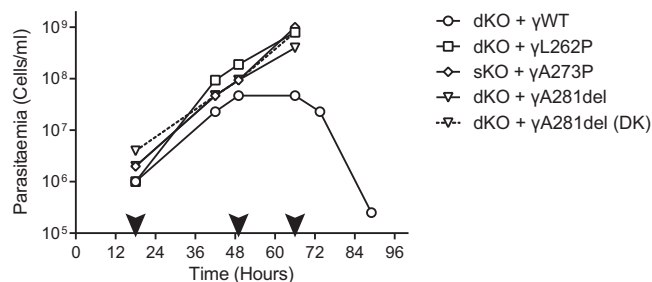


FIG 1 Subunit γ mutations that can compensate for kDNA loss in BF *T. brucei* also confer drug resistance *in vivo*. *In vivo* efficacy of EtBr against BF trypanosomes ectopically expressing a WT, L262P, or γ A281del allele, with both endogenous alleles knocked out (dKO), or γ A273P in a single endogenous knockout background (sKO), was measured by determining parasitemia in blood samples of infected mice. For the A281del-expressing cells, the acriflavine-induced DK form was assayed in parallel (dashed line). The black arrowheads indicate time points of intraperitoneal administration of 10 mg/kg of body weight EtBr to each surviving mouse.

ingly, the only difference between DB75 and DB829 is the substitution in DB829 of one carbon in each of the two benzene rings for nitrogen (26). This single change partially links the mode of action of DB829 to the parasite's dependence on kDNA.

In order to test whether the cell lines with mutated ATP synthase γ remained viable *in vivo* and still retained drug resistance, MF1 mice were inoculated intraperitoneally with each of the cell lines that had been tested *in vitro* (1×10^6 trypanosomes per infection) and treated with normally curative doses of EtBr (Fig. 1; see also Fig. S2 in the supplemental material). For γ WT-expressing cells, parasitemia in the mice peaked around 48 h postinoculation, and trypanosomes were entirely absent from the blood after 4 days (by microscopic inspection of blood smears [29]). In contrast, the mutant γ -expressing cell lines were apparently unaffected by EtBr treatment, with parasitemia increasing exponentially until the experiment was ended, clearly demonstrating that trypanosomes with single point mutations in ATP synthase γ that circumvent dependence on kDNA are viable and drug resistant in animal models. *In vivo*, no noticeable adaptation period was apparent upon EtBr-induced loss of the kinetoplast for the γ A281del mutant, with parasitemia progressing at rates similar to those for the other mutants and with no discernible difference to that of its DK cell line (Fig. 1; see also Fig. S2). This suggests that, *in vivo*, either the A281del mutation is fully sufficient to compensate for kDNA loss or any secondary adaptation occurs much faster than *in vitro*. A third mutation conferring independence from the kinetoplast, γ A273P (in this case, ectopically expressed in a single endogenous knockout background) (9), showed resistance to EtBr similar to that of the γ WT-expressing cell line.

Finally, we investigated the possibility of a change in drug accumulation being responsible for the observed resistance phenotypes. Whole-cell uptake of the naturally fluorescent phenanthridines isometamidium and EtBr was monitored using a previously described oil-stop method to halt uptake at specific time points (30). Over 20 min, no significant differences were observed in the rates of uptake of either compound by γ L262P-expressing trypanosomes (with or without kinetoplast) compared to that of γ WT-expressing trypanosomes (see Fig. S3 in the supplemental material). Thus, mutations to ATP synthase γ do not affect the overall uptake of phenanthridines into the cell, although differ-

ences in the rate of accumulation by the mitochondrion cannot be ruled out.

In summary, we have exploited single point mutations in the F_1F_0 -ATPase to demonstrate that the uncoupling of viability of laboratory strains of *T. brucei* from a functional kinetoplast results in >80-fold resistance to isometamidium, >200-fold resistance to EtBr, and >30-fold resistance to some diamidines. While an obvious explanation for these findings could be that these drugs interfere with the maintenance and/or expression of kinetoplast-encoding genes, we presently cannot rule out that they have additional, relevant mitochondrial targets and that the altered mechanisms for generating a mitochondrial membrane potential ($\Delta\psi_m$) in the mutant cells affect drug accumulation in the mitochondrion. Although the overall drug accumulation of at least phenanthridines was unaffected, a potentially lower $\Delta\psi_m$ in cells expressing the L262P or A281del mutation could change the intracellular drug distribution. This requires further study.

It seems likely that the levels of resistance we observed can be relevant in the field. For example, it has been reported that Chinese *T. evansi* isolates (most, if not all, of which have the A281del mutation) have innate resistance to isometamidium (31), and our results strongly suggest that independence from the kinetoplast plays an important role in this resistance. A report concluding that dyskinetoplastidy is not associated with isometamidium resistance was misled by comparing the sensitivities of *T. evansi* and *T. equiperdum* strains before and after complete deletion of kDNA (21). As we now know, all strains of these species are already pre-adapted to kDNA loss (9); whether certain parts of kDNA remain or not is largely irrelevant for phenanthridine resistance.

ACKNOWLEDGMENTS

We thank Michael Barrett, Harry de Koning, and David Boykin for chemical compounds and critical reading of the manuscript, Akhil Vaidya for proguanil, Heidrun Interthal for camptothecin and etoposide, and the de Koning group for assistance with the uptake assays.

This work was funded by Medical Research Council grant G0600129 and Wellcome Trust grant WT094899MA (to A.S.).

REFERENCES

- Schnauffer A, Panigrahi AK, Panicucci B, Igo RP, Wirtz E, Salavati R, Stuart K. 2001. An RNA ligase essential for RNA editing and survival of the bloodstream form of *Trypanosoma brucei*. *Science* 291:2159–2162. <http://dx.doi.org/10.1126/science.1058655>.
- Bruhn DF, Sammartino MP, Klingbeil MM. 2011. Three mitochondrial DNA polymerases are essential for kinetoplast DNA replication and survival of bloodstream form *Trypanosoma brucei*. *Eukaryot. Cell* 10:734–743. <http://dx.doi.org/10.1128/EC.05008-11>.
- Cristodero M, Seebeck T, Schneider A. 2010. Mitochondrial translation is essential in bloodstream forms of *Trypanosoma brucei*. *Mol. Microbiol.* 78:757–769. <http://dx.doi.org/10.1111/j.1365-2958.2010.07368.x>.
- Hoare CA. 1972. The trypanosomes of mammals. A zoological monograph. Blackwell Scientific Publications, Oxford, United Kingdom.
- Schnauffer A. 2010. Evolution of dyskinetoplastic trypanosomes: how, and how often? *Trends Parasitol.* 26:557–558. <http://dx.doi.org/10.1016/j.pt.2010.08.001>.
- Lai D-H, Hashimi H, Lun Z-R, Ayala FJ, Lukes J. 2008. Adaptations of *Trypanosoma brucei* to gradual loss of kinetoplast DNA: *Trypanosoma equiperdum* and *Trypanosoma evansi* are petite mutants of *T. brucei*. *Proc. Natl. Acad. Sci. U. S. A.* 105:1999–2004. <http://dx.doi.org/10.1073/pnas.0711799105>.
- Schnauffer A, Clark-Walker GD, Steinberg AG, Stuart K. 2005. The F_1 -ATP synthase complex in bloodstream stage trypanosomes has an unusual and essential function. *EMBO J.* 24:4029–4040. <http://dx.doi.org/10.1038/sj.emboj.7600862>.
- Stuart KD. 1971. Evidence for the retention of kinetoplast DNA in an

- acriflavine-induced dyskinetoplastic strain of *Trypanosoma brucei* which replicates the altered central element of the kinetoplast. *J. Cell Biol.* 49: 189–195. <http://dx.doi.org/10.1083/jcb.49.1.189>.
9. Dean S, Gould MK, Dewar CE, Schnauffer AC. 2013. Single point mutations in ATP synthase compensate for mitochondrial genome loss in trypanosomes. *Proc. Natl. Acad. Sci. U. S. A.* 110:14741–14746. <http://dx.doi.org/10.1073/pnas.1305404110>.
 10. Lanteri CA, Tidwell RR, Meshnick SR. 2008. The mitochondrion is a site of trypanocidal action of the aromatic diamidine DB75 in bloodstream forms of *Trypanosoma brucei*. *Antimicrob. Agents Chemother.* 52:875–882. <http://dx.doi.org/10.1128/AAC.00642-07>.
 11. Mathis AM, Holman JL, Sturk LM, Ismail MA, Boykin DW, Tidwell RR, Hall JE. 2006. Accumulation and intracellular distribution of antitrypanosomal diamidine compounds DB75 and DB820 in African trypanosomes. *Antimicrob. Agents Chemother.* 50:2185–2191. <http://dx.doi.org/10.1128/AAC.00192-06>.
 12. Wilson WD, Taniouss FA, Mathis A, Tevis D, Hall JE, Boykin DW. 2008. Antiparasitic compounds that target DNA. *Biochimie* 90:999–1014. <http://dx.doi.org/10.1016/j.biochi.2008.02.017>.
 13. Mukherjee A, Padmanabhan PK, Sahani MH, Barrett MP, Madhubala R. 2006. Roles for mitochondria in pentamidine susceptibility and resistance in *Leishmania donovani*. *Mol. Biochem. Parasitol.* 145:1–10. <http://dx.doi.org/10.1016/j.molbiopara.2005.08.016>.
 14. Deterding A, Dungey FA, Thompson K-A, Steverding D. 2005. Antitrypanosomal activities of DNA topoisomerase inhibitors. *Acta Trop.* 93: 311–316. <http://dx.doi.org/10.1016/j.actatropica.2005.01.005>.
 15. Shapiro TA, Englund PT. 1990. Selective cleavage of kinetoplast DNA minicircles promoted by antitrypanosomal drugs. *Proc. Natl. Acad. Sci. U. S. A.* 87:950–954. <http://dx.doi.org/10.1073/pnas.87.3.950>.
 16. Roy Chowdhury A, Bakshi R, Wang J, Yildirim G, Liu B, Pappas-Brown V, Tolun G, Griffith JD, Shapiro TA, Jensen RE, Englund PT. 2010. The killing of African trypanosomes by ethidium bromide. *PLoS Pathog.* 6:e1001226. <http://dx.doi.org/10.1371/journal.ppat.1001226>.
 17. Zuma AA, Cavalcanti DP, Maia MCP, de Souza W, Motta MCM. 2011. Effect of topoisomerase inhibitors and DNA-binding drugs on the cell proliferation and ultrastructure of *Trypanosoma cruzi*. *Int. J. Antimicrob. Agents* 37:449–456. <http://dx.doi.org/10.1016/j.ijantimicag.2010.11.031>.
 18. Tang SC, Shapiro TA. 2010. Newly identified antibacterial compounds are topoisomerase poisons in African trypanosomes. *Antimicrob. Agents Chemother.* 54:620–626. <http://dx.doi.org/10.1128/AAC.01025-09>.
 19. Agbe A, Yielding KL. 1995. Kinetoplasts play an important role in the drug responses of *Trypanosoma brucei*. *J. Parasitol.* 81:968–973. <http://dx.doi.org/10.2307/3284050>.
 20. Zhang ZQ, Giroud C, Baltz T. 1993. *Trypanosoma evansi*: *in vivo* and *in vitro* determination of trypanocide resistance profiles. *Exp. Parasitol.* 77: 387–394. <http://dx.doi.org/10.1006/expr.1993.1098>.
 21. Kaminsky R, Schmid C, Lun ZR. 1997. Susceptibility of dyskinetoplastic *Trypanosoma evansi* and *T. equiperdum* to isometamidium chloride. *Parasitol. Res.* 83:816–818. <http://dx.doi.org/10.1007/s004360050346>.
 22. Räs B, Iten M, Grether-Bühler Y, Kaminsky R, Brun R. 1997. The Alamar Blue assay to determine drug sensitivity of African trypanosomes (*T. b. rhodesiense* and *T. b. gambiense*) *in vitro*. *Acta Trop.* 68:139–147. [http://dx.doi.org/10.1016/S0001-706X\(97\)00079-X](http://dx.doi.org/10.1016/S0001-706X(97)00079-X).
 23. Painter HJ, Morrissey JM, Mather MW, Vaidya AB. 2007. Specific role of mitochondrial electron transport in blood-stage *Plasmodium falciparum*. *Nature* 446:88–91. <http://dx.doi.org/10.1038/nature05572>.
 24. Priest JW, Hajduk SL. 1994. Developmental regulation of mitochondrial biogenesis in *Trypanosoma brucei*. *J. Bioenerg. Biomembr.* 26:179–192. <http://dx.doi.org/10.1007/BF00763067>.
 25. Holmes PH, Eisler MC, Geerts S. 2004. Current chemotherapy of animal trypanosomiasis, p 431–444. *In* Maudlin I, Holmes PH, Miles MA (ed), *The trypanosomiasis first*. CABI Publishing, Wallingford, United Kingdom.
 26. Wenzler T, Boykin DW, Ismail MA, Hall JE, Tidwell RR, Brun R. 2009. New treatment option for second-stage African sleeping sickness: *in vitro* and *in vivo* efficacy of aza analogs of DB289. *Antimicrob. Agents Chemother.* 53:4185–4192. <http://dx.doi.org/10.1128/AAC.00225-09>.
 27. Wenzler T, Yang S, Braissant O, Boykin DW, Brun R, Wang MZ. 2013. Pharmacokinetics, *Trypanosoma brucei gambiense* efficacy, and time of drug action of DB829, a preclinical candidate for treatment of second-stage human African trypanosomiasis. *Antimicrob. Agents Chemother.* 57:5330–5343. <http://dx.doi.org/10.1128/AAC.00398-13>.
 28. Thuita JK, Wolf KK, Murilla GA, Liu Q, Mutuku JN, Chen Y, Bridges AS, Mdachi RE, Ismail MA, Ching S, Boykin DW, Hall JE, Tidwell RR, Paine MF, Brun R, Wang MZ. 2013. Safety, pharmacokinetic, and efficacy studies of oral DB868 in a first stage vervet monkey model of human African trypanosomiasis. *PLoS Negl. Trop. Dis.* 7:e2230. <http://dx.doi.org/10.1371/journal.pntd.0002230>.
 29. Herbert WJ, Lumsden WH. 1976. *Trypanosoma brucei*: a rapid “matching” method for estimating the host’s parasitemia. *Exp. Parasitol.* 40:427–431. [http://dx.doi.org/10.1016/0014-4894\(76\)90110-7](http://dx.doi.org/10.1016/0014-4894(76)90110-7).
 30. Ward CP, Burgess KE, Burchmore RJ, Barrett MP, de Koning HP. 2010. A fluorescence-based assay for the uptake of CPD0801 (DB829) by African trypanosomes. *Mol. Biochem. Parasitol.* 174:145–149. <http://dx.doi.org/10.1016/j.molbiopara.2010.07.002>.
 31. Brun R, Lun ZR. 1994. Drug sensitivity of Chinese *Trypanosoma evansi* and *Trypanosoma equiperdum* isolates. *Vet. Parasitol.* 52:37–46. [http://dx.doi.org/10.1016/0304-4017\(94\)90033-7](http://dx.doi.org/10.1016/0304-4017(94)90033-7).

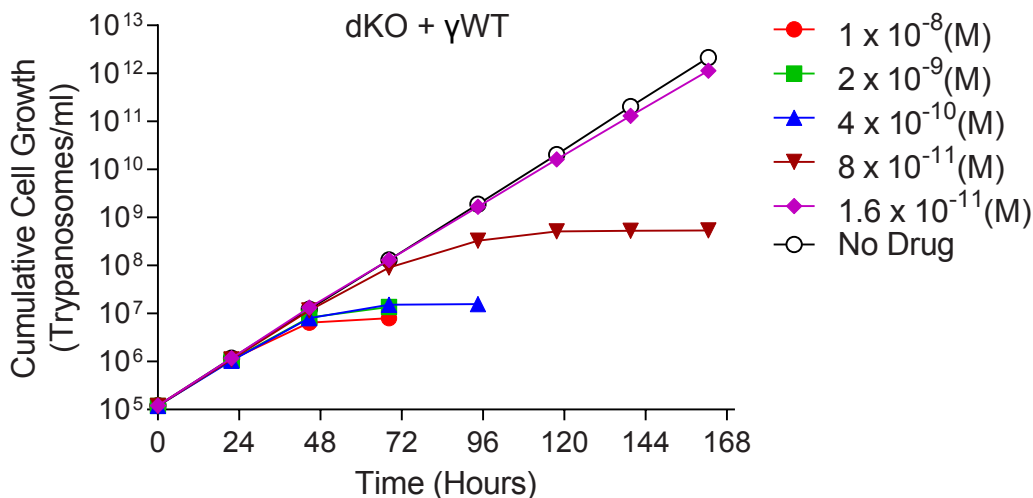
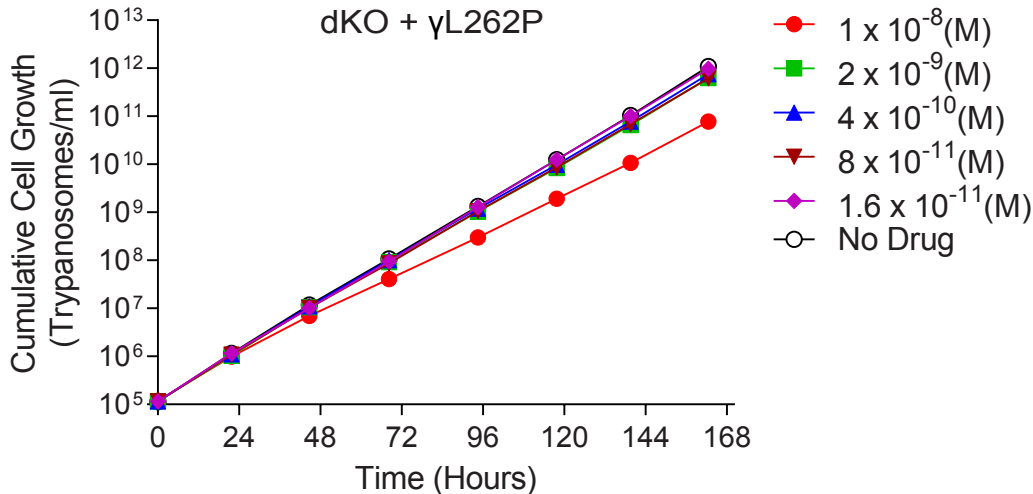
A**B**

FIG S1 Mutations to ATP synthase γ give resistance to isometamidium *in vitro*. Sensitivity to isometamidium of BF *T. b. brucei* ectopically expressing wild type (A) or L262P mutated (B) ATP synthase γ with both endogenous alleles knocked out was determined by culturing parasites in the concentrations indicated and measuring parasite density every 24 hours. Cumulative cell numbers reflect normalization for dilution during cultivation.

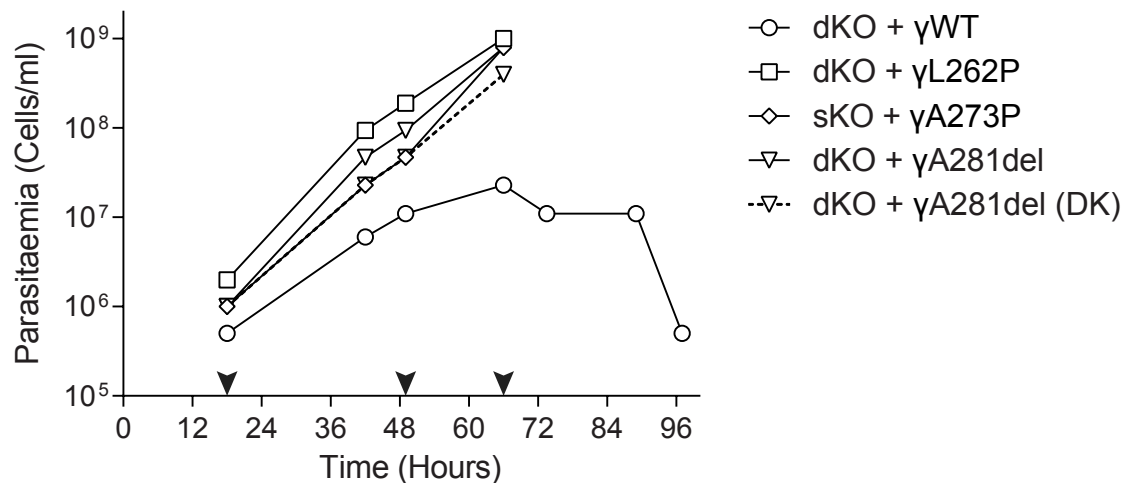
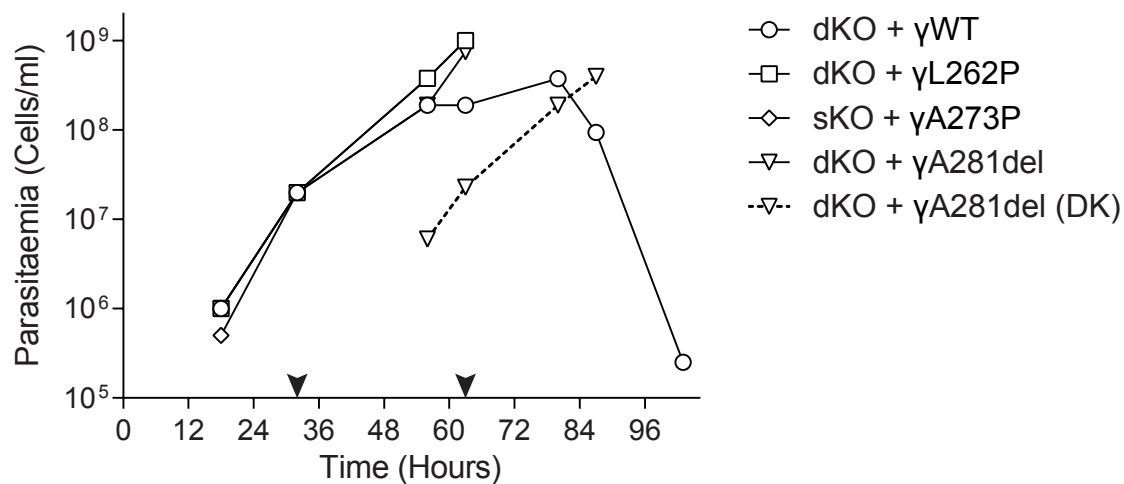
A**B**

FIG S2 Repeat cohorts of FIG 1: Subunit γ mutations that can compensate for kDNA loss in BF *T. b. brucei* also confer drug resistance *in vivo*. *In vivo* efficacy of EtBr treatment of mice against BF trypanosomes ectopically expressing one of WT, L262P or A281del γ alleles, with both endogenous alleles knocked out, or an A273P γ in a single endogenous knock out background, was measured by determining parasitaemia in blood samples of infected mice. For the A281del expressing cells, the acriflavine-induced DK form was assayed in parallel (dashed line). The black arrowheads indicate time-points of intraperitoneal administration of 10 mg/kg EtBr to each surviving mouse.

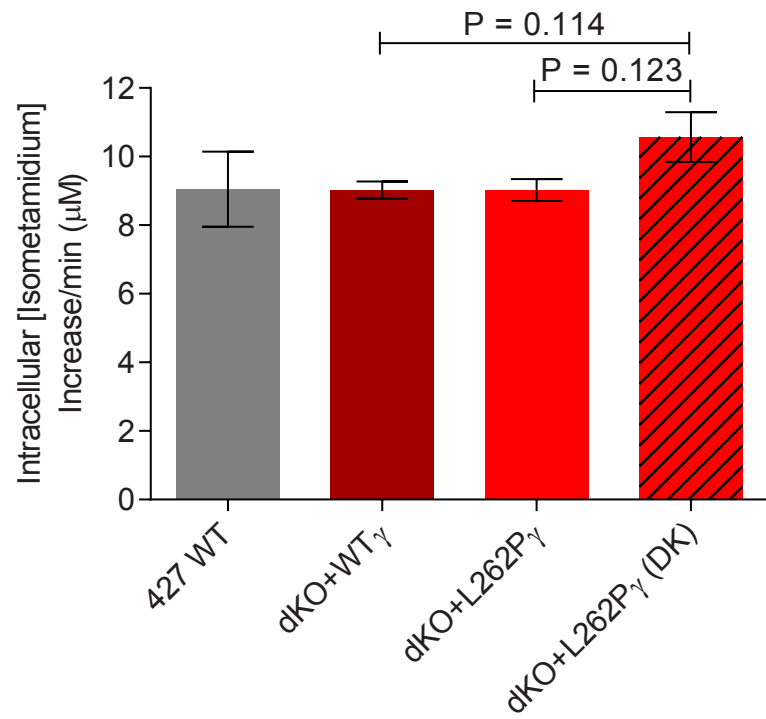
A

FIG S3 Mutations to ATP synthase γ do not significantly alter the cellular rate of uptake of phenanthridine compounds by BF *T. b. brucei*. Uptake of 10 μM isometamidium (A) and EtBr (B) was measured over 20 minutes in BF trypanosomes ectopically expressing wild type (WT) or L262P mutated ATP synthase γ with both endogenous alleles knocked out. The DK version of the L262P mutant is also included, as is the parental WT Lister 427 cell line. P-values were derived using a paired, 2-tailed Student's t-test.

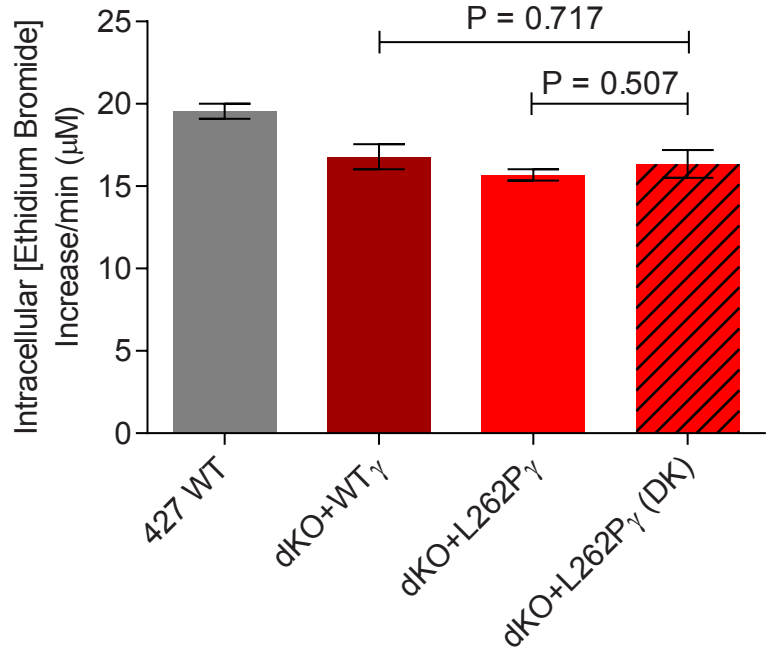
B

TABLE S1 Cross resistance characterisation of L262P mutated ATP synthase γ expressing trypanosomes with both endogenous alleles knocked out, with and without (DK) their kinetoplast, compared to WT ATP synthase γ expressing cells.

Compound	Lister 427	γ WT	γ L262P	Resistance Factor vs. γ WT	γ L262P (DK)		
	Mean EC ₅₀ (μ M)	Mean EC ₅₀ (μ M)	Mean EC ₅₀ (μ M)		Mean EC ₅₀ (μ M)	Resistance Factor vs. γ WT	Resistance Factor vs. γ L262P
Topoisomerase inhibitors							
Etoposide	4.74 \pm 2.76	1.34 \pm 0.08	1.58 \pm 0.13	1.2	1.22 \pm 0.08	0.9	0.8
Camptothecin	1.13 \pm 0.03	0.82 \pm 0.01	0.84 \pm 0.01	1.0	0.74 \pm 0.02	0.9	0.9
Norfloxacin	35.3 \pm 1.8	48.9 \pm 1.8	45.0 \pm 1.9	0.9	44.1 \pm 1.6	0.9	1.0
Enoxacin	52.6 \pm 1.9	57.1 \pm 3.0	52.0 \pm 3.2	0.9	50.9 \pm 2.3	0.9	1.0
Mitochondria-targeting anti-malarials							
Proguanil	25.1 \pm 3.0	22.8 \pm 2.1	25.0 \pm 3.2	1.1	24.5 \pm 3.0	1.1	1.0
Atovaquone	12.7 \pm 0.7	12.5 \pm 0.5	12.1 \pm 0.3	1.0	10.3 \pm 0.1	0.8	0.9

Note: etoposide / camptothecin and proguanil were kind gifts from Heidrun Interthal and Akhil Vaidya, respectively; all other compounds were purchased from Sigma.

TABLE S2 Cross resistance characterisation of L262P mutated ATP synthase γ expressing trypanosomes with both endogenous alleles knocked out, with and without (DK) their kinetoplast, compared to WT ATP synthase γ expressing cells.

Compound	<u>Lister 427</u>	<u>γWT</u>	<u>γL262P</u>		<u>γL262P (DK)</u>		
	Mean EC ₅₀ (nM)	Mean EC ₅₀ (nM)	Mean EC ₅₀ (nM)	Resistance Factor vs. γ WT	Mean EC ₅₀ (nM)	Resistance Factor vs. γ WT	Resistance Factor vs. γ L262P
Miscellaneous trypanocides							
Suramin	69.0 ± 10.9	54.7 ± 11.2	49.0 ± 10.5	0.9	37.9 ± 7.0	0.7	0.8
Nifurtimox	2216 ± 95	2171 ± 36	3931 ± 183	1.8	1974 ± 175	0.9	0.5
Melarsen oxide	9.5 ± 0.4	8.4 ± 0.7	8.4 ± 0.4	1.0	7.5 ± 0.2	0.9	0.9

Note: melarsen oxide was a kind gift from Michael Barrett and Harry de Koning. Suramin was purchased from Sigma.